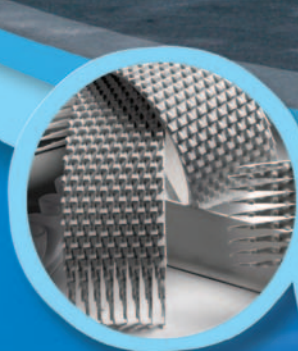


# B | BENNE S.A.

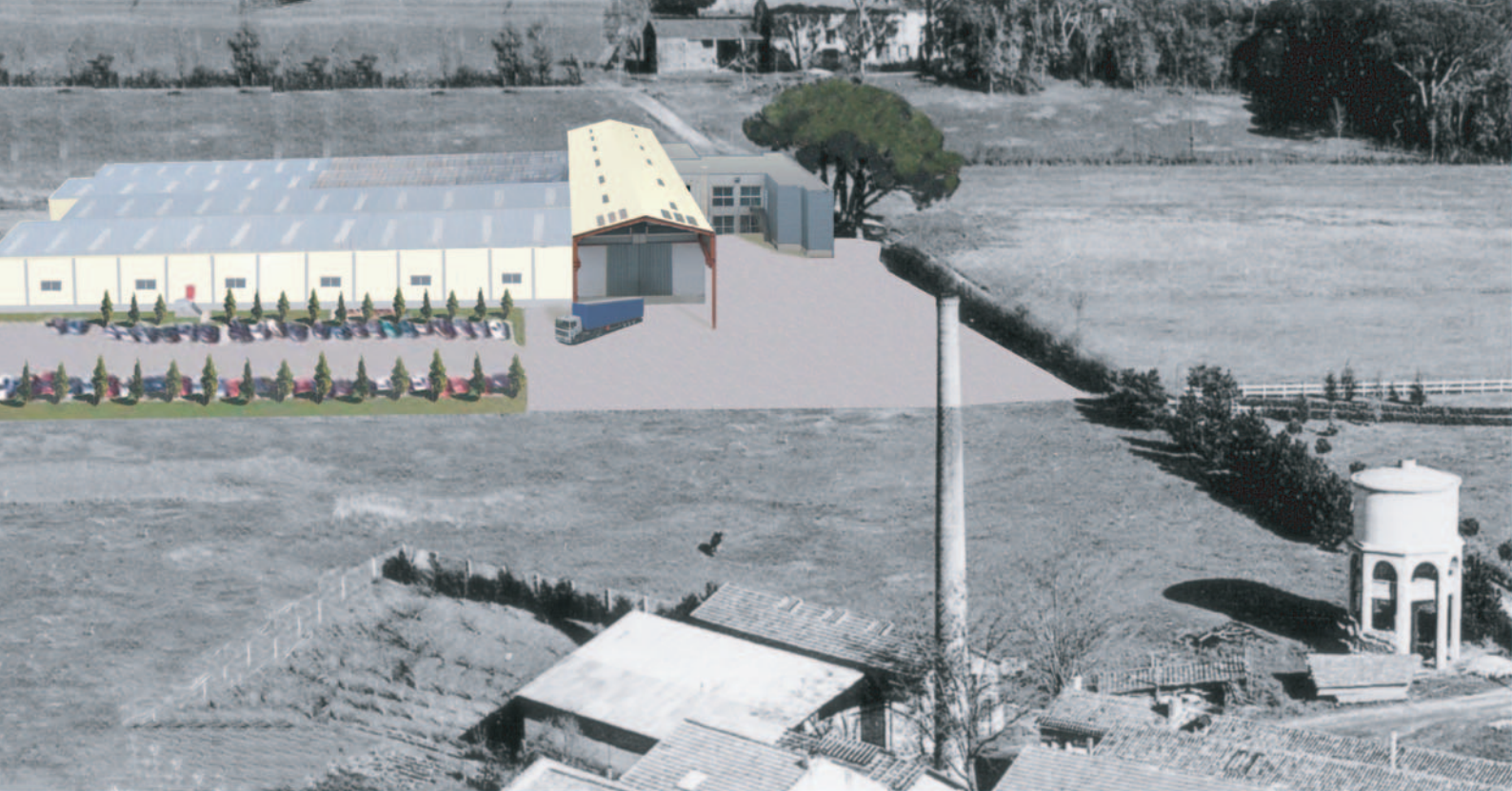
Making production run smoothly



- Industrial assemblies
- Belts and drive belts
- Conveyors
- Boilerwork
- Mechanical work
- Laser cutting
- Fine sheet metal work shop
- 3D printing
- Robotics

[www.benne-sa.fr](http://www.benne-sa.fr)





BENNE S.A. was established in 1919 in Castres, in the south-west of France. Thanks to the know-how of our engineers and technicians, to the cutting edge technologies that we employ, we can fine tune our response to our customers request to provide complete solutions for conveying, belts and drive belts, 3D printing, sheet metal, robotics, ...

BENNE S.A., a key partner whatever your sector of activity :  
agri-foodstuffs, pharmaceutical, chemical, waste management, bottling, cardboard, automotive ...

## » History

- 1919** Creation of the BENNE company: Production of Auer gas burners for gas lighting.
- 1925** The company specialises in the production of weaving combs for the regional textile industries.
- 1985** Creation of BENNE S.A. and specialisation in the production of conveyor bands and transmission belts.
- 1990** Design and creation of conveying systems to provide a complete solution for the company's customers.
- 1999** Integration of a boilerwork and industrial sheet metal workshop equipped with a laser cutting station.
- 2006** Doubling of the production area and robotic automation of the laser cutting station.
- 2007** Doubling of the Design Office.
- 2009** Addition of a mechanical workshop.
- 2011** Launch of the Néoveur range after three years of R & D and merging of our two workshops to increase production speed.
- 2014** Development in Senegal, Morocco and Ivory Coast through a partnership with local companies.
- 2015** Refurbishment of our factory and numerous investments in state-of-the-art machines (CNC folding machine, combined powder and micro bead cabin, 3D printer, ...).
- 2016** Creation of a subsidiary in Algeria.
- 2017** Strengthened Néoveur range with more than 100 new conveyor models.
- 2018** Investment in a complete and modern machining station.



# Our human and material resources

## » 130 people including :

- 15 **engineers and salespeople** ready to help you
- 20 **draughtsmen-designers** specialising in different sectors of activity
- 40 **qualified boilermakers**
- 20 **fitters responsible** for installation and maintenance
- 3 **automation specialists**
- 3 **quality managers** responsible for monitoring the quality of our products
- 3 **engineers** in charge of **R & D**



## » An industrial site covering 10,000 m2

- Production unit for specific belts and drive belts
- Production and assembly unit for conveyors and other sheet metal products, boilerwork mechanics

## » High-performance equipment with a permanent investment in hardware

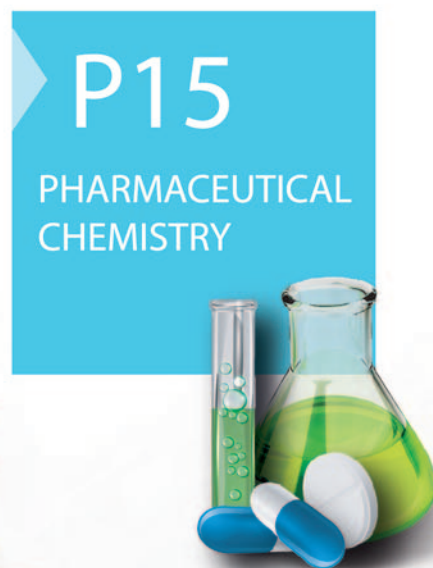
- Fully automated **presses for vulcanising conveyor belts** (vulcanisation width 0 to 3200 mm)
- **High-frequency fitting of cleats and tread profiles**
- **Laser cutting station** for sheets up to 3,000 x 1,500 mm - 20 mm thick
- **Oxygen cutting** for sheets up to 3,000 x 1,500 mm - 70 mm thick
- **CNC folding machine** with a capacity of 4000 mm in length
- **CNC tube cutting machine**
- **Mechanical workshop** : Mazak and Haas machining station - Cazeneuve, parallel and CN Mazak lathes - Milling machines
- **Lifting devices** for large loads: 10 m high and heavy loads: 5 tons
- **Combined powder painting and micro bead cabin**
- Use of the latest parametric **3D software**
- **3D printer** with a print area of 406 x 355 x 406 mm
- **Mechanical software** : Solidcam FAO



## Our sectors of operation

- Study, design, and production of all conveyor systems
- Manufacture of conveyor bands and belts
- Conventional and precision mechanics
- Laser cutting, industrial boiler work
- Fine sheet metal work
- 3D printing
- Robotics

# » SUMMARY





P16

BOTTLING



P18

MANAGEMENT  
OTHER



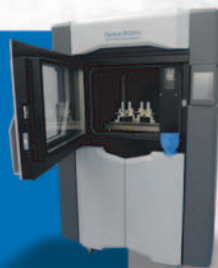
P17

WASTE

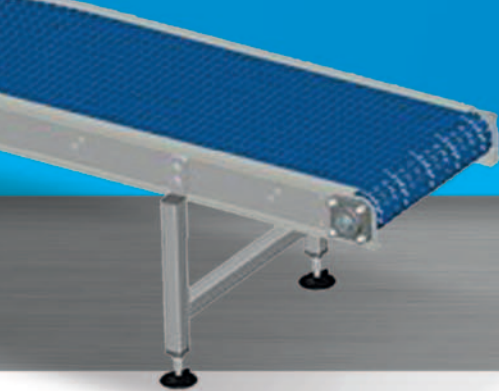


P19

3D  
PRINTING







# NÉOVEUR



Curved conveyor  
belt 90° saber

## » Standard range presentation Study, design, and production

- Belt conveyors
- Modular belt conveyors
- Metal belt conveyors
- Slat band chain conveyors
- Gravity or motorised roller conveyors
- Vibrating conveyors
- ...



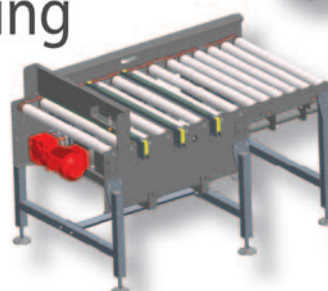
Straight cantilever  
conveyor with belt lift



Straight conveyor with  
double inflection

## » Total control of the manufacturing process

- Designed by our design office
- Manufactured in our workshops
- On-site assembly 7 days a week
- Technical assistance
- After-sales service



Right conveyor  
with right angle

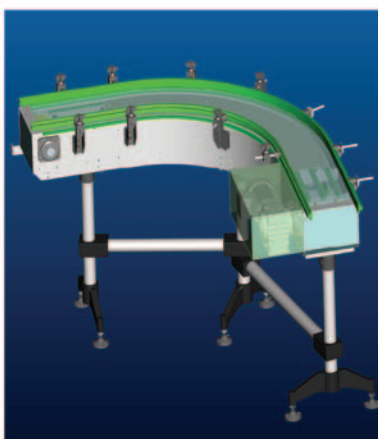
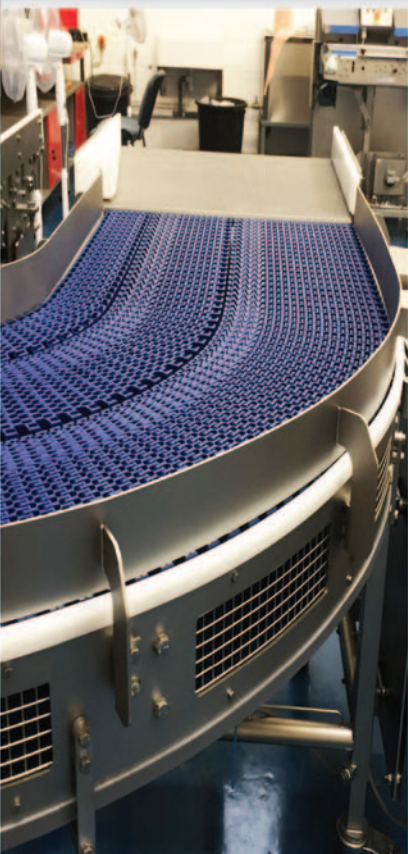
## » Safety

- All of our conveying systems and machines are designed in compliance with safety standards and EC standards : protective grilles, casings, emergency stops ... to ensure the safety of your operators.
- All our conveyor systems and machines are delivered with the mandatory technical documents : assembling plan, compliance documents, technical rule list, description of the solutions implemented for preventing risks, instruction manual.



Configure your  
conveyor directly on :  
**www.neoveur.com**





» Production of standard stainless steel conveyors available within



■ A simple, economical and rapid solution for all your :

- Line modifications
- Integrations of new machines
- Special productions

» Technical characteristics

- All stainless steel
- Continuous welding
- "Herringbone" structure
- Motorised driving pulley
- Belt scraper
- Belt lift conveyor  
(less than 2 minutes for it to be changed)



Néoveur « Agro »

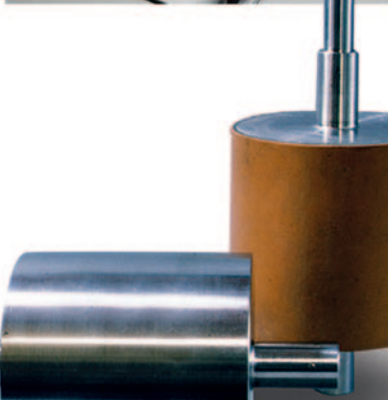
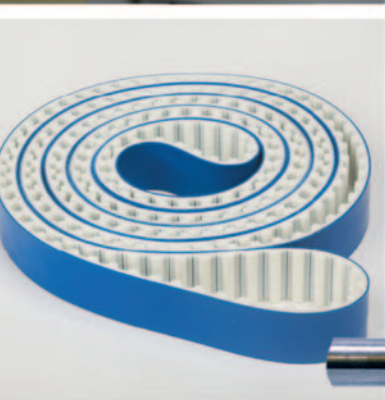
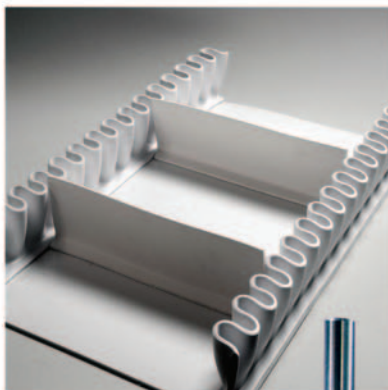
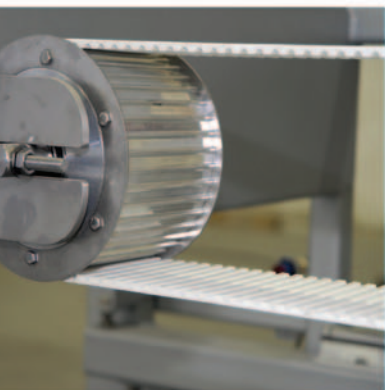




# BELTS AND DRIVE BELTS

## » We take care of you

- More than 30 years of experience manufacturing belts and drive belts.
- Specialised technicians at your service who can advise you on the best solution.
- A large and permanently maintained stock means we can deliver to you within 24 hours or even on the same day in the case of an emergency.
- Operations on your site 7 days a week by our specialised teams.
- Possibility to mark your references on the belt for improved traceability (safety ink).



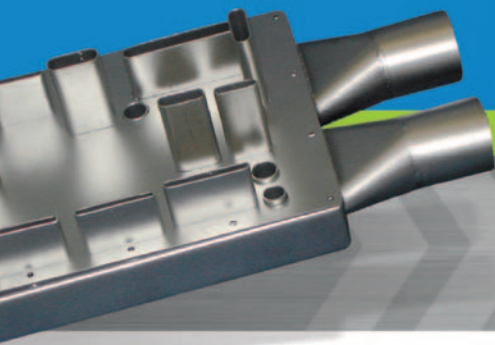


## » A large choice of products to meet all your demands

- PVC, PU conveyor belts, safety PU, SILICONE ...
- Flat and notched belts
- Round, flat, trapezoidal and other heat-sealable belts
- Metallic, steel and stainless steel belts
- Modular and slat band chain belts
- Teflon
- Fitting of guide profiles and cleats
- Fitting of capacity edging
- Fitting of anti-fray or anti-microbial edging
- Z or mechanical junction
- Fitting fasteners : embedded, polyamide ...
- Coating rollers
- Coatings : Foam, linatex, silicone ...



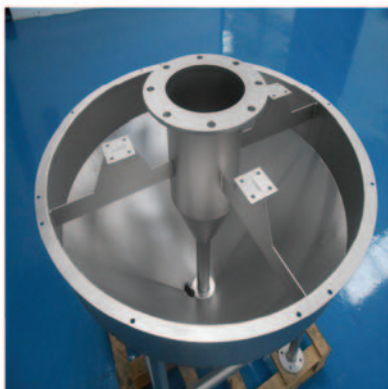




# BOILER & MECHANICAL WORK

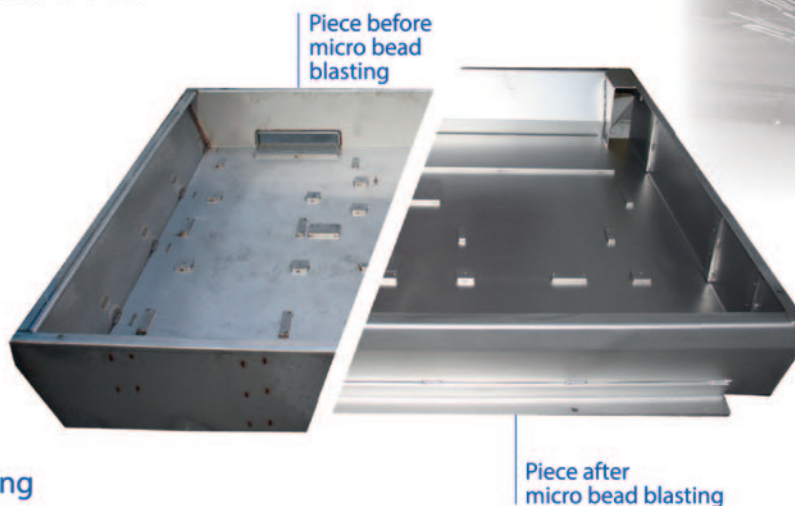
» High-performance equipment that allows us to meet all your demands

- Folding
- Bottling
- Fast and precise cutting
- Single items, small and large series
- Laser cutting for agri-foodstuff
- Precision folding thanks to angle controllers
- Production of complex parts

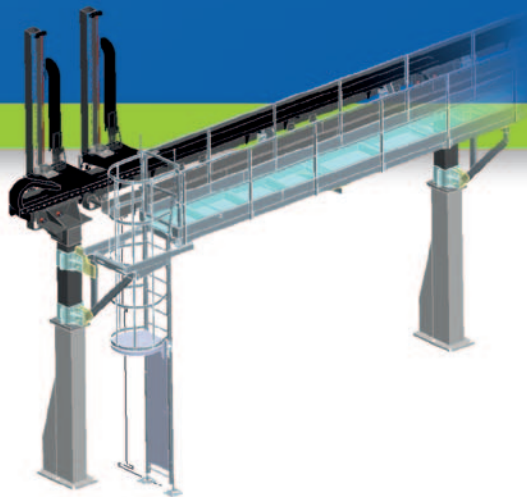


» We also perform all types of finishing operations

- Microperforation
- Etching
- Drilling
- Tapping
- Surface treatment
- Micro bead blasting
- Vibrating drum
- Powder paint
- TIG, MIG, MAG, Pulsed welding





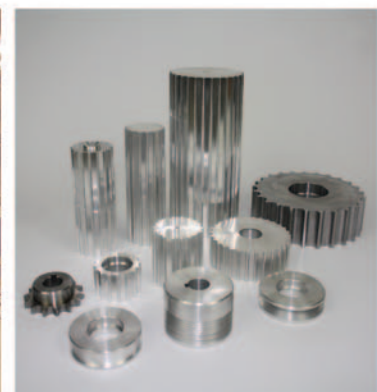


## » A complete and state-of-the-art stock of machines

- Mazak VTC-20B and Haas VF455 machining stations  
Dim 1,270 / 508 / 635 mm
- Cazeneuve 590 Optimax lathe, parallel lathe, Mazak CN lathe
- Milling machine with drilling column
- Ernault Somua milling machine
- Slotting machine, cross movement, and turntable
- Drill, toolmaker's table, and variator
- Solidcam FAO software

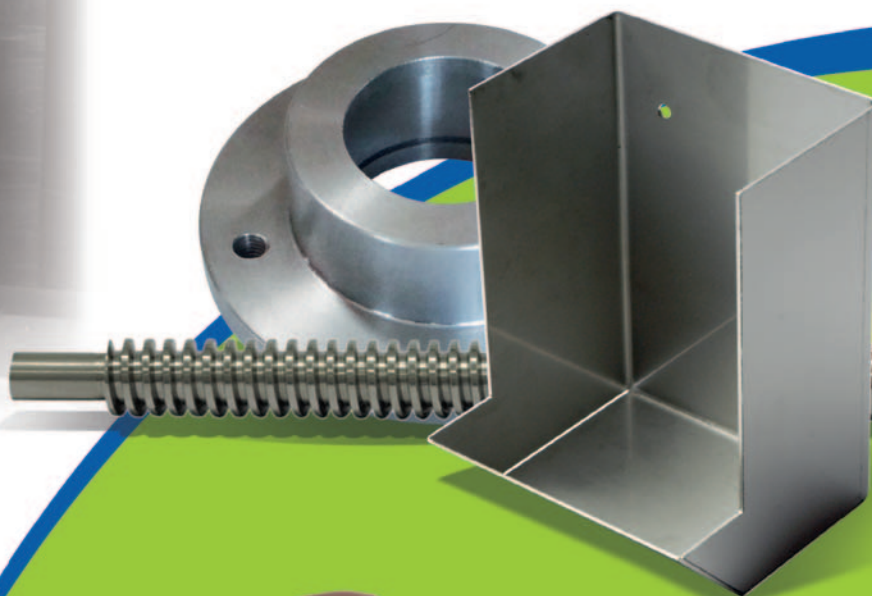
**This stock of machines allows us to meet all your needs both rapidly and at a competitive price.**

**Production of parts in small or large series up to 1/100e.**



## » Machining of a range of materials

**Steel, stainless steel, bronze, cast iron, aluminium, plastic ...**



**BUREAU  
VERITAS**

**Qualification QMOS**





# INDUSTRIAL ASSEMBLIES

Specialist in manufacturing conveying systems. BENNE SA has manufactured conveyors for all industries. Automated lines for chocolate manufacturers, from transporting visitors at the Castle of Versailles, to conveying sticks of dynamites.

All of these assignments have made us a key player in the French conveyor market and confirms our position as a specialist in transfers between machines.

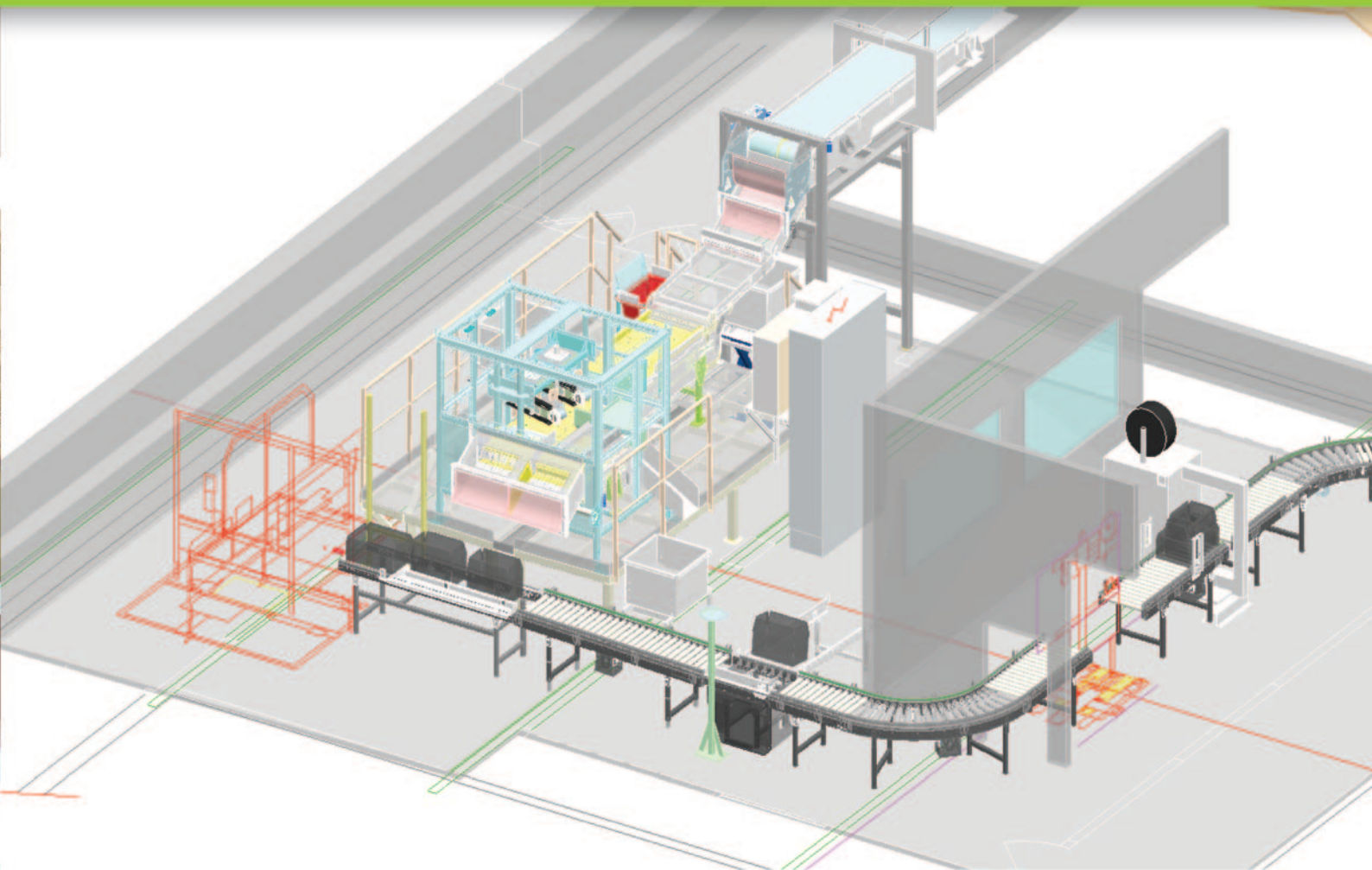


## » Possibility of producing turnkey factories

- Buildings studied with an architect
- Creation of the structure (our 10 000m<sup>2</sup> factory was an in-house production)
- Research to find suppliers for your machinery (bagging machine, product marking, packaging machine, etc.)
- Integration of manufacturing machines on our conveyors
- Assembly and delivery of your turnkey factory











# AGRI-FOODSTUFFS



With over 35 years of experience in agri-foodstuffs. Our conveyors adapt to the specific problems of agri-foodstuff industries :

- Respect of your manufacturing processes
- Transfers between machines
- Operation in aggressive **environments**
- Daily cleaning of your equipment

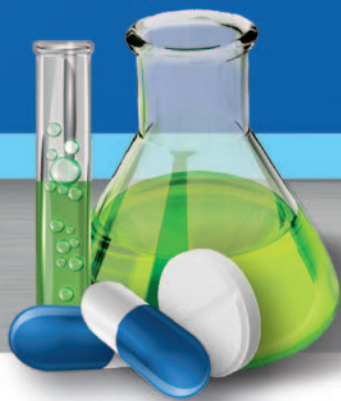
Our teams which are specialised in the foodstuffs industry are at your disposal to conceptualise, manufacture and **give life** to your **ideas**.

» The BENNE S.A. conveyors designed for agri-foodstuff industries are manufactured :

- With zero retention points
- With very rapid belt removal (less than a minute) making it easier to clean your machine
- In all stainless steel to allow daily cleaning and thus avoiding corrosion
- The belts come with their foodstuff certification in accordance with EC standards



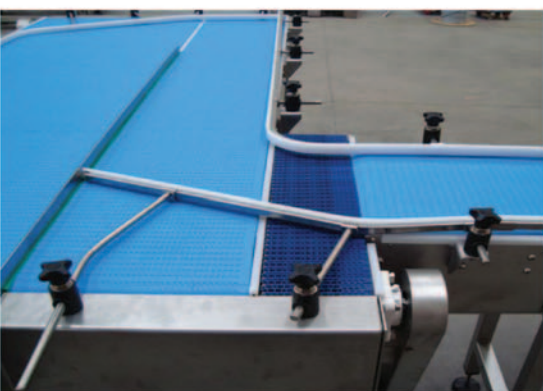
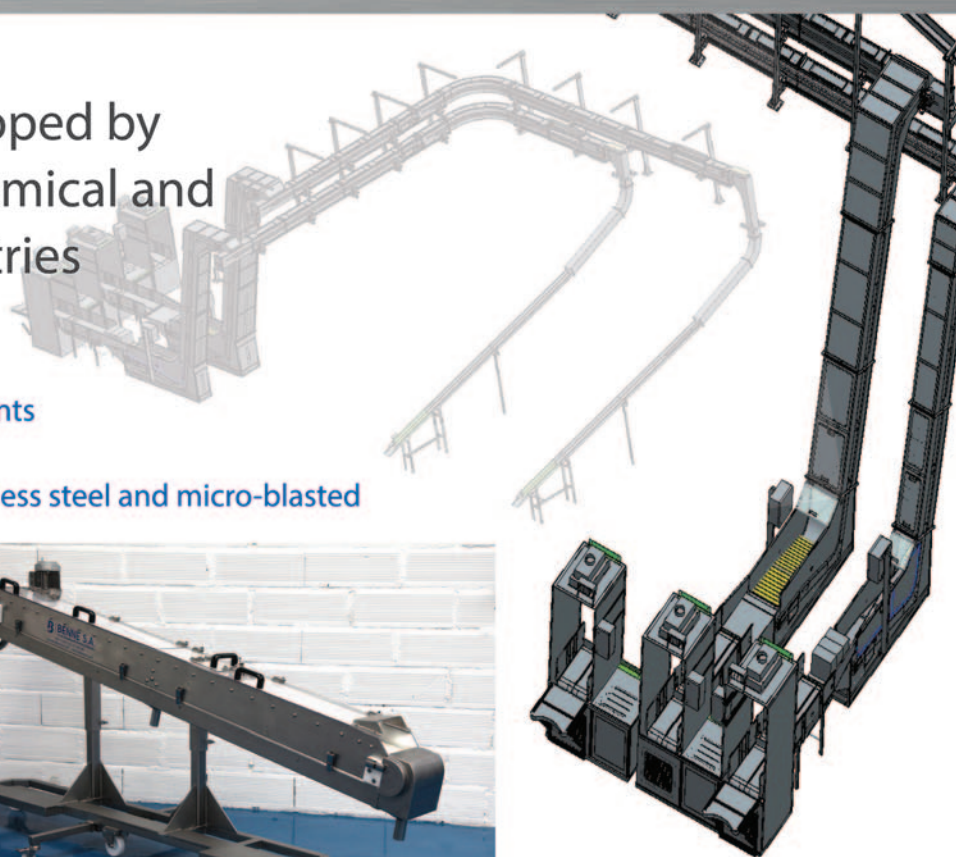




# PHARMACEUTICAL / CHEMISTRY

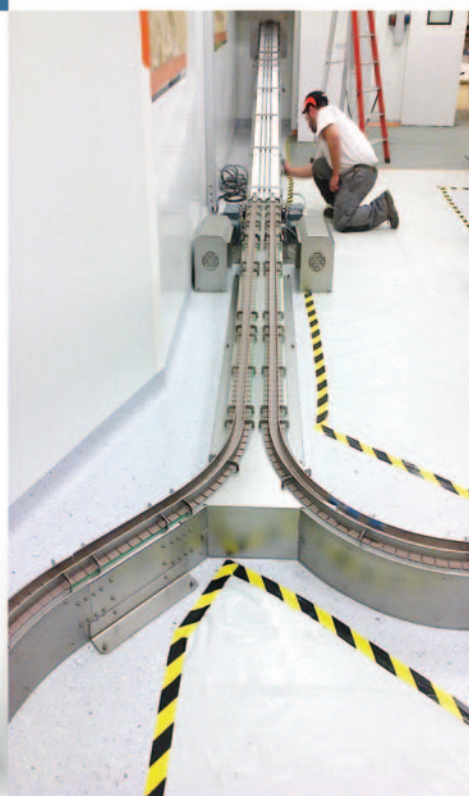
» Special options developed by BENNE S.A. for the chemical and pharmaceutical industries

- Air-proof conveyors for handling in different pressure zones
- Easily removable conveyor components (motor, belt, housing, etc.)
- Conveyors entirely produced in stainless steel and micro-blasted



» Our conveyors are specially designed for :

- Easy identification, maintenance, and cleaning
- Validation of the manufacturing process before production along with the product flows
- Ease of use by your operators, thanks to the simple, intuitive control of the equipment
- Allowing each conveyor component to be monitored and replaced if necessary
- Adapting to your production plants and your structural constraints
- Making life easier for your operators through the development of ergonomic workstations



**BUREAU  
VERITAS**

Qualification QMOS







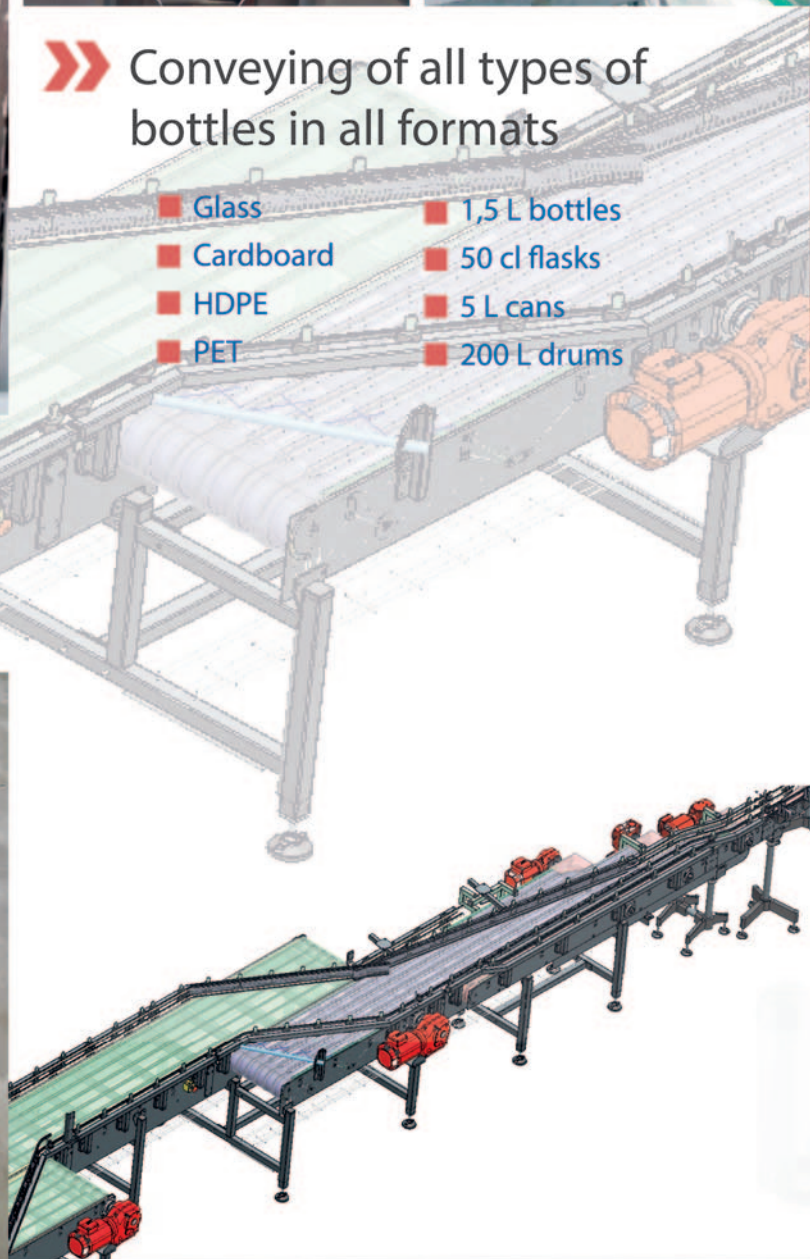
# BOTTLING



» Conveying of all types of bottles in all formats

- Glass
- Cardboard
- HDPE
- PET
- 1,5 L bottles
- 50 cl flasks
- 5 L cans
- 200 L drums

BENNE SA has developed bottling lines that respond to production constraints associated with high volumes and product changes, with the creation of an oxygen source in your production.



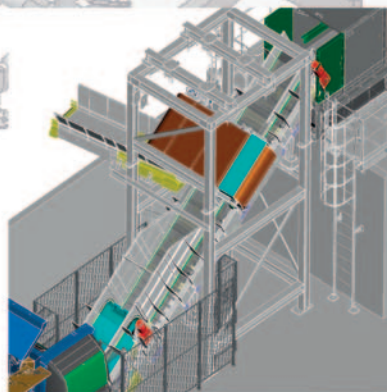
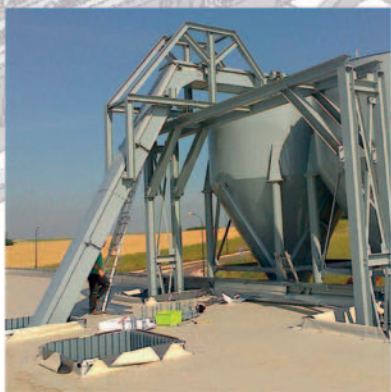




# WASTE TREATMENT

## » Our conveyors resist : » Our conveying systems are :

- Corrosion
- Various shocks
- Cuts
- ...
- Completely producible in stainless steel
- With belts or metal belts
- Fully automated to manage, process and sort all of your waste



## » Our machines are adaptable to your factory and your operators :

- Ergonomic workstations on sorting lines
  - Fully air-proof to prevent dust, particles, steam, ...
  - Emergency shutdown to avoid mechanical risks (grinding, compacting, crushing ...)
  - Reduced handling
- Improved workflows







## OTHER



Since the creation of our company, we have manufactured more than 7,000 conveyors for many sectors of activity (wood, textile and laundry industries, plastic and metal constructors, cardboard industry, etc.).



Specialists in manufacturing specific conveying systems, our engineers draw and design your production lines so that they adapt perfectly to your factory and allow your operators to work safely.





# 3D PRINTING



1st worldwide conveyor in 3D

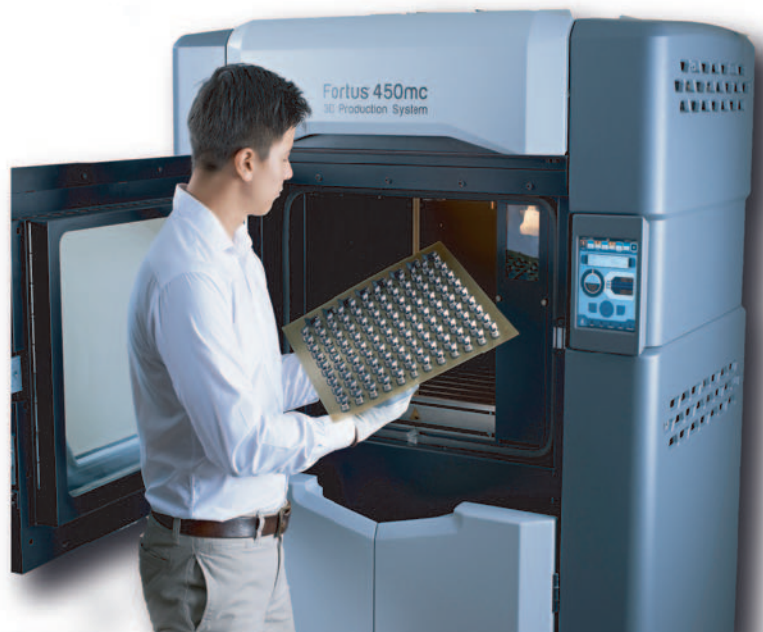
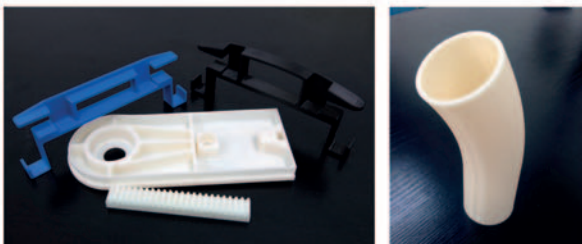


- Our 3D printer allows us to print components up to 406 x 355 x 406 mm
- Possibility of using different materials : ASA, PC, NYLON, ABS-M30, ABS-M30i, ASA-1510 cc, ABS-ESD7, PC-ISO, ...
- We use Thread Deposit technology
- Non-toxic and food grade materials



» We are at your disposal to print your components :

- Send us your CAD files to receive a quote the same day
- An idea ? a problem ? a solution ? our design engineers are available to conceptualise and design your components










1, rue Jean Foucault  
Z.I. de Mélou  
81100 CASTRES  
Tel. +33 (0)5 63 62 60 00  
Fax +33 (0)5 63 35 96 10  
Email: benne@benne-sa.fr

## RECEPTION

Monday to Friday from 7:45 am to 6 pm  
Saturday morning from 8 am to 12 pm  
Open all year  
Possible penalty for 24-hour  
troubleshooting




BENNE S.A.

BCA









-  Head office
-  Grand Ouest agency
-  Subsidiaries
-  Dealers
-  Customer countries

## Our References





### AGRI-FOODSTUFFS

-  Danone
-  Coca-Cola
-  Evian
-  Roquefort Société
-  Lindt
-  Perrier
-  Andros
-  Charal
-  Vandamme
-  Bigard
-  Les Fermiers Landais
-  Intermarché
-  Nutrition et Santé
-  Valrhona
-  Nestlé Ghana
-  Compagnie Fruitière









### PHARMACEUTICS

-  Pierre Fabre Médicament
-  Bristol-Myers Squibb
-  Merial
-  Excelvison
-  Lyocentre S.A.
-  Unither
-  Sanofi
-  Elaiapharm
-  Startorius







### AUTOMOBILE

-  Comau
-  Rieter
-  Filtrauto Purplux
-  Bosch





### BOTTLING

-  Perrier
-  Evian
-  Quézac
-  Monin
-  Luchon
-  Vinalvalie
-  Abatilles
-  Pernod Ricard







### WASTE TREATMENT

-  Environnement 48
-  Frigopolis
-  Econotre
-  Biranenvironnement
-  Artemise
-  Greenwishes

### WOOD SECTOR

-  Canson
-  Lapeyre
-  Smurfit Kappa France
-  La Couronne

### MISCELLANEOUS

-  Airbus
-  Isover
-  Compin
-  Gavap
-  Actemium
-  Snef Firac